

Products Car View System



PV701M
7" Color Wide
TFT-LCD Monitor
Car Rear view Systems



PV701MQ
7" Color Wide
TFT-LCD Monitor
Car Rear QuAD Systems



PV701C
1/3" Color
Rear View Camera
with 8IR LEDs
Car Rear view Systems



PV601SC
1/3" Color
Side View Camera
With 8IR LEDs
Car Rear & Side view Systems



PV7016HDVR
7" 6 Views HD Car DVR
6 CH (2XHD + 4XD1)
Dual Record (SSD+SD)
FTP of Event Pictures



Company Information



Contents

1. About us
2. Company History
3. Organization & Business Policy
4. Products





Company Information



ABOUT US

Welcome to Possible Vision!

As a specialized manufacturer with plentiful experiences in the field of security & safety industries, we, Possible Vision, are constantly pursuing to satisfy all of our quality oriented customers with our fine designs and the advanced technologies. In this kind of our everlasting efforts, we are going to achieve our goal, which ourselves would be one of the best and first choice names for the products contributing to the life of the people in the world.

Now we would like to recommend you to try us and to enjoy your success with our high quality products combined with advanced technologies and the designs met with global market trends at current.

In this regards, if you have any unique ideas on designs, functions and technologies in mind, please come to us and see it comes true at our place.

We are ready to realize your ideas and requirements with our strong engineering task force, who have abundant experiences over 20 years at R&D in the Security & Safety industries.

For your successful business, please do not hesitate to inquire us whatever you need.

Thanks in advance for your choice to realize your dreams with us!





Company Information



COMPANY HISTORY

2016

- ▷ December, 2016 : Launched '6Ch DVR with 7" built-in Hexa-view Monitor System' into world market

2014

- ▷ October, 2014 : Developing '6Ch DVR with 7" built-in Hexa-view Monitor System for Heavy Vehicles like as Truck, Bus and Armored Car etc.'

2011

- ▷ January, 2011 : Launched 'HD (1280 X 720 Pixels) 2 Channels (Dual Cameras) Black Box' expected to be launched in March, 2011

2010

- ▷ June, 2010 : Launched 'Black Box / Multi purpose Vehicle and Home Video Recorder (D1 : 720 X 480 Pixels)' into world market
- ▷ April, 2010 : Launched 'Car Black Box with LDWS (Lane Departure Warning System)' into world market

2009

- ▷ October, 2009 : Acquired patent for 'Apparatus of monitoring the lower part of a vehicle (Patent No. : 1020080030622)'
- ▷ September, 2009 : Launched 'CCTV & Miniature Cameras (540 TV Lines)' into world market

2008

- ▷ May, 2008 : Launched 'Quad & Tacho Monitor' into world market
- ▷ April, 2008 : Launched 'Side View Camera' into world market





Company Information



2007

- ▷ December, 2007 : Patent for 'Rubber Sun Shield of Rearview Monitor
- ▷ November, 2007 : Acquired FCC & E-Mark including CE approval
- ▷ October, 2007 : Launched 'Car Rearview System' into world market
 - 7" Wide TFT LCD Monitor built-in 3 cameras control system
 - Day & Night IR LED Rearview Camera
- ▷ August, 2007 : Launched 'CCTV & Miniature Cameras (420 TV Lines)' into world market
- ▷ June, 2007 : Launched 'PMP (Portable Multimedia Player)' into world market
 - 4.3" LCD, 30GB HDD, Win CE 5.0, DMB etc : Developed in cooperation with our affiliated company

2006

- ▷ April, 2006 : Acquired patent for 'Monitor Mounting Bag with Sun Visor & Headrest in Car' (Patent No. : 10-0574427)

2005

- ▷ April, 2005 : Launched 'Portable DVD Player Monitor with Rearview System' into world market

2003

- ▷ December, 2003 : Established 'POSSIBLE VISION Co., Ltd.'





Company Information



ORGANIZATION

CEO

Sales Division

Overseas Sales
Strategic Marketing
Trading Team

R & D Division

Planning
Design
R&D

Global Operation Division

Manufacturing Management
QA
Material Management

Management Division

Finance & Account
Management Operation

BUSINESS POLICY

DIFFERENTIATED MANAGEMENT

To be first and unique designs & products in market

SPEEDY MANAGEMENT

To meet with market trend & customer needs in time

QUALITY MANAGEMENT

Perfect product quality assurance system

CUSTOMER's SATISFACTION

Satisfaction of customer's needs and supply of new values

MORAL MANAGEMENT

Moral management as enhancing transparency of management



Products Car View System



PV701M
7" Color Wide
TFT-LCD Monitor
Car Rear view Systems



PV701MQ
7" Color Wide
TFT-LCD Monitor
Car Rear QuAD Systems



PV701C
1/3" Color
Rear View Camera
with 8IR LEDs
Car Rear view Systems



PV601SC
1/3" Color
Side View Camera
With 8IR LEDs
Car Rear & Side view Systems



PV7016HDVR
7" 6 Views HD Car DVR
6 CH (2XHD + 4XD1)
Dual Record (SSD+SD)
FTP of Event Pictures

PV 7016HDVR

6Ch DVR with 7" built-in Hexa-view Monitor System for Car





Products Information



PV 7016HDVR 6Ch DVR with 7" built-in Hexa-view Monitor System for Car

KEY FEATURES

- Main Chipset : TI platform for embedded DVR
- Storage Device : SSD X 1 (Recommend 256 GB ~ Up to)
Micro SD X 1 (128 GB Max.)
- Supports Dual Recording : SSD – Continuous & Event Record
SD – Event Record only
Firmware upgrade
- Combining 2Ch HD (1280 X 720) Cameras (Option)
and Max. 4Ch D1 (720 X 480) Cameras (Option)
- WIFI Client Mode : Internet Access Through WIFI Hot Spot
- FTP of JPEG Pictures generated automatically when event occurs
- Live viewing with the monitor built-in
- Playback of Recorded Data with the monitor built-in
- Voice Information on operation status and warning
- Authentication with ID and Password
- Real time recording in the various modes : Continuous Record
Shock Event Record
Emergency Event Record
- Provides various bit rate and frame rate
- 5 Trigger Inputs (Rear, Left, Right, Front or Celling, Tacho)
- Virtual Keyboard
- IR Remote Control
- Removable SSD Case with USB 3.0 port
- USB 2.0 port for Backup Data in AVI file and Firmware Upgrade
- System Watch Dog for SSD, Malfunction , Low Voltage Detection
- Super-cap for unexpected shutdown of power
- External GPS with Google map
- External Microphone (Option)
- External Mini USB WIFI Dongle (Option)

SPECIFICATIONS

OS	Embedded Linux
Codec	Video : H.264 High Profile Audio : G.711
Video	2Ch HD Camera (Ser-Des POC type cable) 4Ch D1 Cameras (NTSC/PAL)
Audio	1Ch MIC Input + 1Ch D1 Camera Audio (Ca 1 : Rear)
HD Sensor	Angle of view 127° (Diagonal) Resolution : 1280 X 720
Display	800 X 3(RGB) X 480 TFT LCD
Recording Performance	180fps encoding/decoding @NTSC
(NTSC / PAL)	150fps encoding/decoding @PAL
Recording File	Resolution : HD + D1 Bit rate : High / Medium / Low Frame rate : select 3 step (NTSC : 30/20/15 fps, PAL : 25, 12, 8 fps)
Recording Mode	Continuous Record, Shock Event, Emergency Event
Playback and Search	6 Channel recording file Continuous / Event Search
Storage	SSD X 1 (Recommend 256GB ~) : Continuous Record Micro SD X 1 (128GB Max.) : Event Record
Camera Loss Detection	Warning Message on LCD
Remote Controller	Support IR Remote Controller
Firmware Upgrade	Support by Micro SD Card and USB Memory
GPS	Support External port
G-sensor	2,4,8G 3 axis digital accelerometer
Trigger	5 Trigger Inputs
Power	Input : DC 10V ~ DC 30V Support Super Capacitor
PC Player	Support OS : Windows
Operation Temperature	0°C ~ 60°C
Storage Temperature	- 20°C ~ 80°C



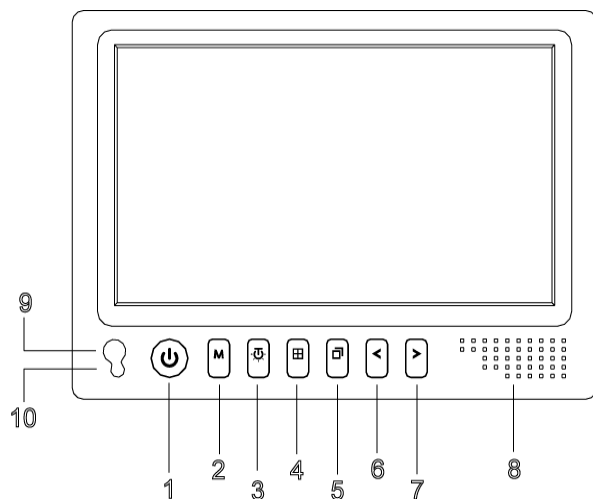


Products Information

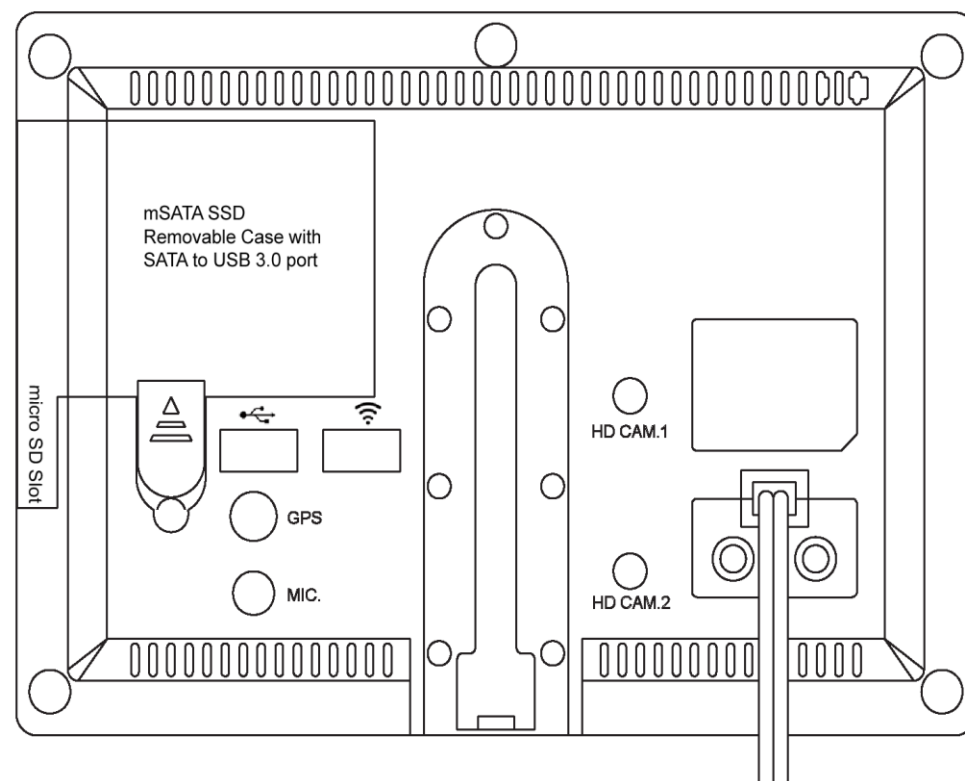


Front & Rear Panel Layout

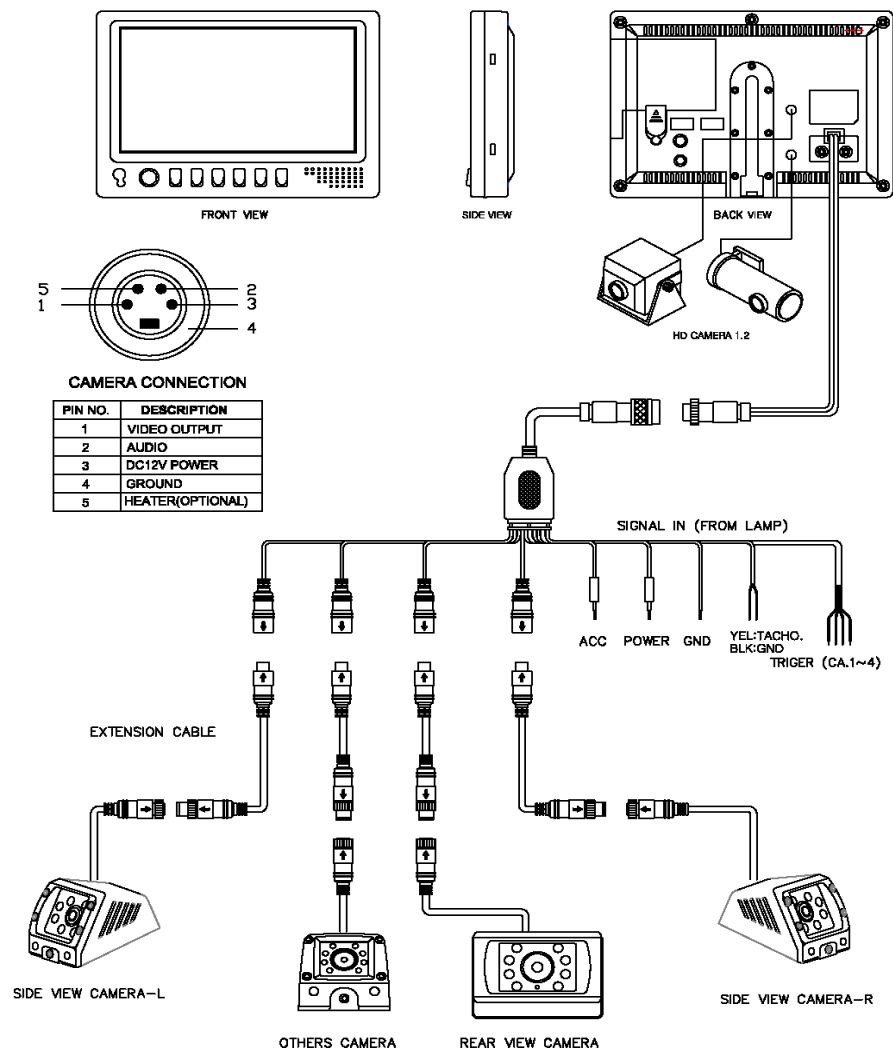
PV 7016HDVR – 6Ch Car DVR with 7" Monitor



- | | |
|---|---|
| ① Power (Blue,Blinking in Green,No Light) | ⑥ Volume Down / Left Button in OSD Menu |
| ② Menu / Backward Button in OSD Menu | ⑦ Volume Up / Right Button in OSD Menu |
| ③ Enter | ⑧ Speaker |
| ④ Screen / up Button in OSD Menu | ⑨ Remote Control Sensor |
| ⑤ Channel / Down Button in OSD Menu | ⑩ Auto Bright (CDS) Sensor |



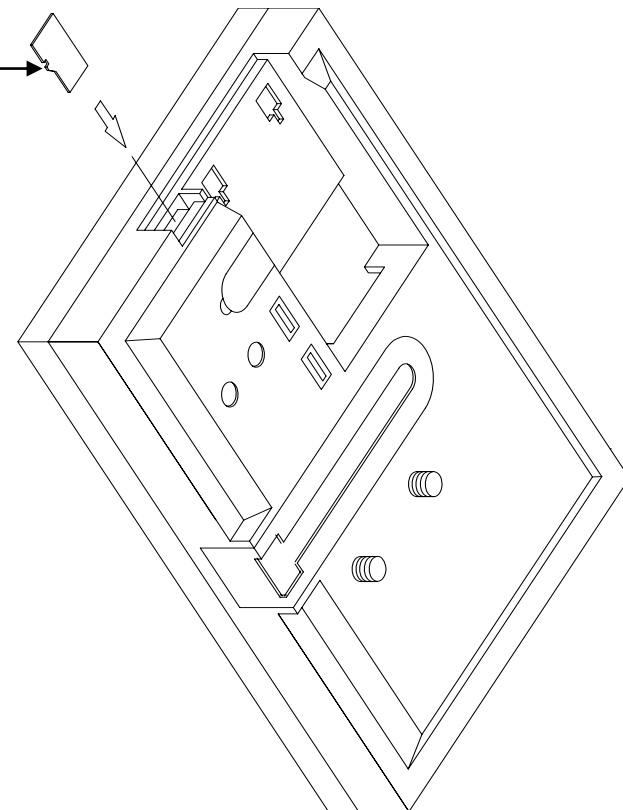
System Wiring



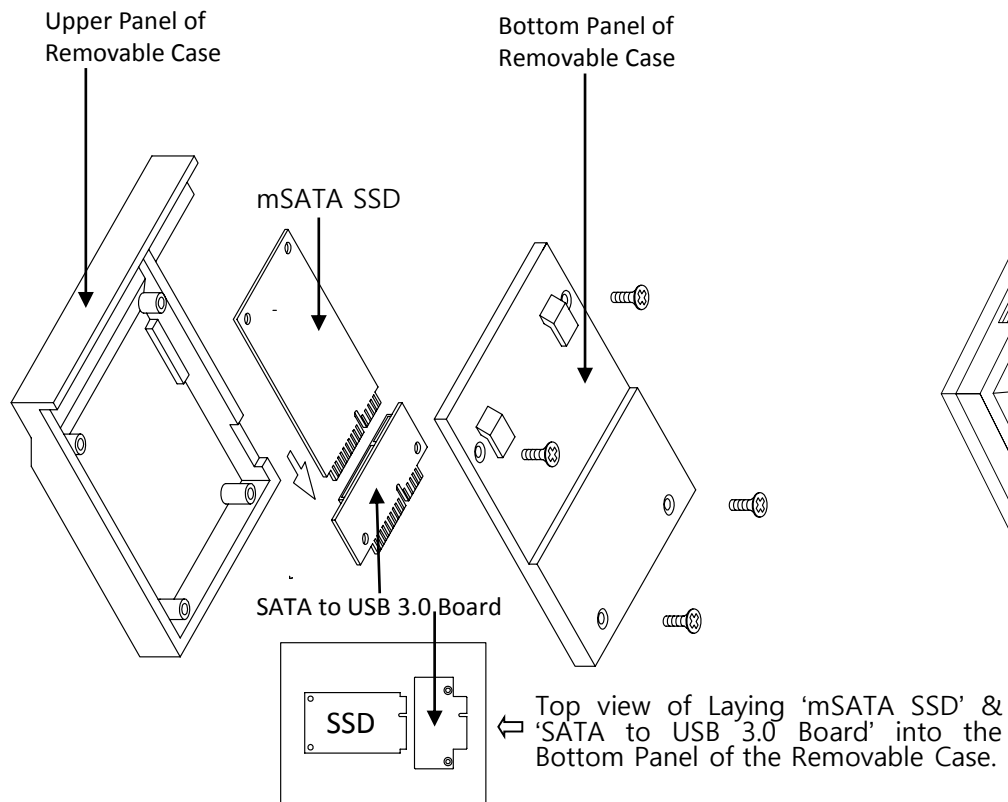
Mounting SD memory card

Micro SD Memory Card

Insert the Micro SD Memory Card into the slot on the Rear Panel in direction of arrow. Refer to the drawing figured herewith.

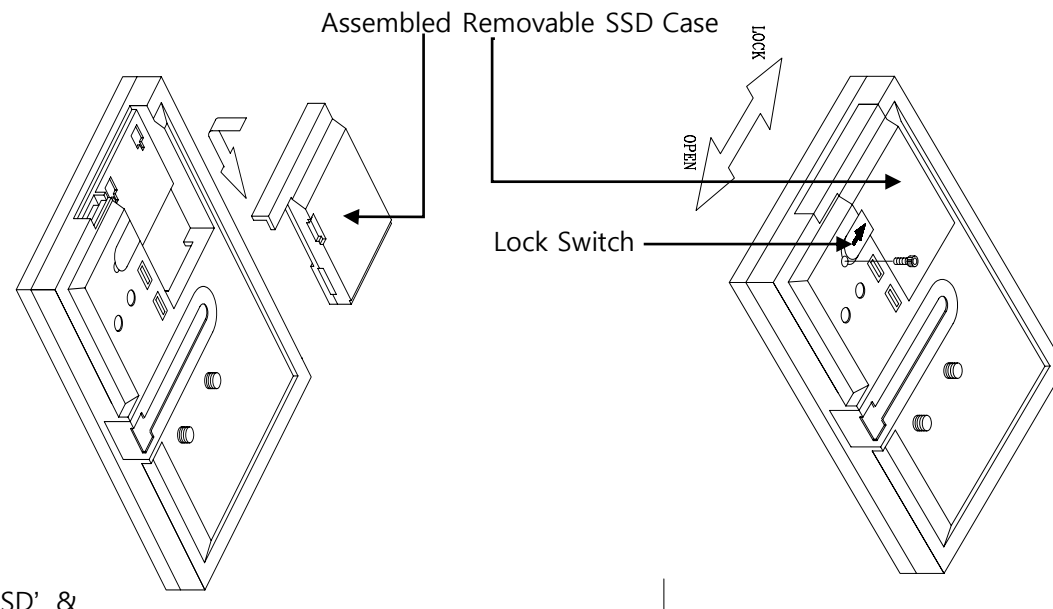


Mounting SSD into the Removable Case



Put 'mSATA SSD' & 'SATA to USB 3.0 Board' into the Bottom Panel of Removable Case and cover it with the Upper Panel of Removable Case and fasten the bolts. Refer to the drawings figured herewith.

Mounting Assembled SSD Case with the Rear Panel



Insert the assembled Removable SSD Case into the rabbet on the Rear Panel in direction of the arrow and slide upwards the Lock Switch in direction of the arrow mark on it and fasten the hexagonal bolt into the inserted nut underneath of Lock Switch. Refer to the drawings figured herewith. If Lock Switch is unlocked, SSD is not recognized and it does not work in this DVR product.



PV701MQ Quad & Tacho Monitor

7" Wide Color LCD Quad & Tacho System





Products Information



PV 701MQ Quad & Tacho Monitor

KEY FEATURES

- Color Rear View Monitor
- 7" Color Wide(16:9) TFT-LCD Monitor
- 1440 × 234 Pixels
- Display Mode : Nor./ Mir. and Up/ Down Image Reversing
- 10 ~ 32V DC Free Voltage operation
- 4 Camera Inputs & 1 AV(RCA) Input-Option
- 4 Ch. & Tacho Trigger Function – Rear, Side (L/R), Front etc & Tacho Trigger On Auto Screen Display
- Shutter / Tilt Camera Available (Ch. 1 only)
- Auto Bright : Built-in CDS Sensor
- Tacho Speed Function
 - ▶ Monitoring function for car status or obstacles under 30km driving and Automatic on-off by 30km speed
 - ▶ On Off and Speed Control Available
- 1~4 Ch. NTSC / PAL Selection & AV Input Auto Selection
- Language : 6 Language
- A/V In for VCR, VCD, DVD, DVR – Optional
- Button Illumination
- Built-in Speaker
- Rainproof (IP 54)
- Vibration Resistant (4G)
- Sun Shield with Protection Rubber- Patent
- Mountable to the Dashboard / Ceiling / Wind Shield
- Space-Saving Design
- Remote Control-Option

SPECIFICATIONS

Screen Size	7" Wide / 155mm × 89mm
Resolution	1440 (w) × 234(H) mm
Dot Pitch	0.107(w) × 0.370(H)mm
Field of View	Up : 40° / Down : 60° Left : 60° / Right : 60°
Signal Format	NTSC / PAL / SECAM
Input Signal	4 Cameras / 1 AV Input
Power Source	DC 10~32V Free Voltage
Power Consumption	Max. 14 Watts
Operation Temperature	-4F° to + 158F° (-20°C to + 70°C)
Storage Temperature	-22°F to + 185°F (-30°C to + 85°C)
Dimension	186(w) × 132(H) × 25(D)mm 7.3(w) × 5.2(H) × 1.0(D) inch
Weight	0.6kg



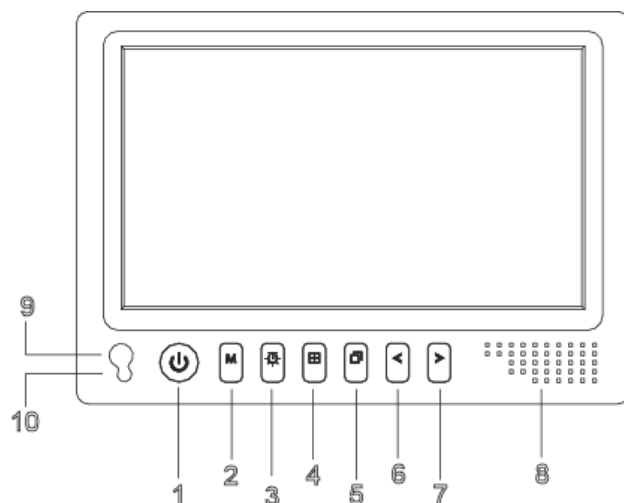


Products Information



Features / Technical Specifications

PV701MQ / QUAD & TACHO MONITOR



- ① Power (On : Blue / Off : Green)
- ② Menu (Forward Menu)
- ③ Tachometer & Dimmer (Backward Menu)
- ④ Quad (Cursor down)
- ⑤ Channel (Cursor up)
- ⑥ Volume Down
- ⑦ Volume Up
- ⑧ Speaker
- ⑨ Remote Control Sensor
- ⑩ Auto Bright Sensor

MONITOR	7" WIDE TFT LCD	RESOLUTION	1440 (W) x 234(H) Pixels
		BRIGHTNESS	450 cd / m ²
		SCREEN MODE	WIDE SCREEN(16:9)
		CONTRAST RATIO	300 : 1
	FUNCTIONS	CAR REAR VIEW	AUTOMATIC SCREEN-ON (SIGNAL FROM "R" GEAR)
		CAR SIDE VIEW(X2)	AUTOMATIC SCREEN-ON (SIGNAL FROM WINKER)
		DISPLAY MODE	NOR / MIR. & UP / DOWN IMAGE REVERSING PER CH.
		4 CAMERAS & 1 AV INPUT	REAR / SIDE (L,R) / FRONT ETC & AV (OPTION)
		POWER SOURCE	DC 10V ~ 32V (Free voltage)
		OPERATING TEMP.	-20°C ~ 70°C / -4°F ~ +158°F
		STORAGING TEMP.	-30°C ~ 85°C / -22°F ~ +185°F
		AUDIO OUTPUT	BUILT-IN SPEAKER (1W)
		REMOTE CONTROL	BUILT-IN REMOTE RECEIVER
		AUTO BRIGHT	BUILT-IN CDS SENSOR
	SIZE	DIMENSION	186(W) x 132 (H) x 25(D) mm (7.3x5.2x1.0 Inch)
		WEIGHT	0.6 Kg
	CAMERA	WATERPROOF / SUN SHIELD / IR SENSOR / NORMAL / MIRROR / HEATER	
	ACCESSORIES	POWER & CAMERA INPUT CABLE / STAND BRACKET KIT / SUCTION CUP KIT (OPTIONAL) SUN SHIELD WITH PROTECTION RUBBER (PATENT PENDING)	
	OPTIONAL	REAR / SIDE / SHUTTER / TILT CAMERA / REMOTE CONTROL	



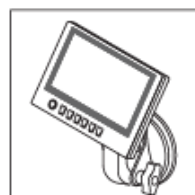
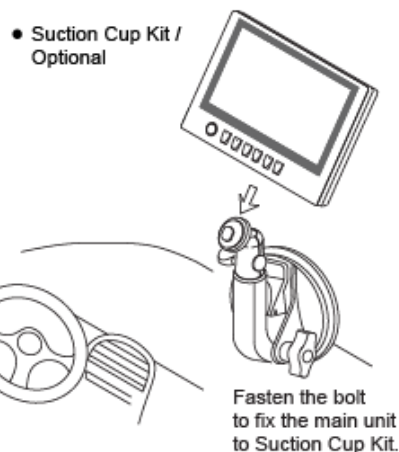
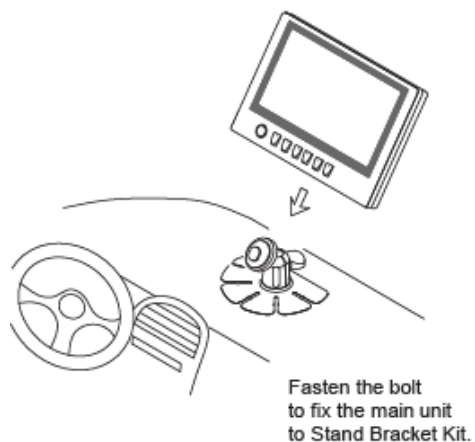
Products Information



Using PV701MQ in the car

For using PV701MQ on the dashboard

- After connecting power to the unit through the Cigarette adaptor, press [Power button] on the main unit or on the Remote Control to power on.
- Set up PV701MQ with Stand Bracket Kit and fix the Stand Bracket Kit on the dashboard of the car.



Accessories

- Power & Camera Input Cable



- Stand Bracket Kit



- Suction Cup Kit / Optional



- Sun Shield with Protection Rubber



- User Guide

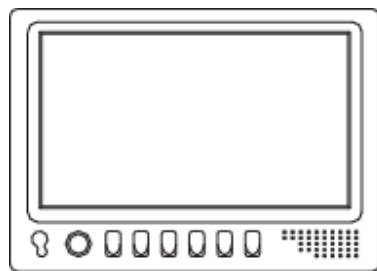




Products Information



System Wiring

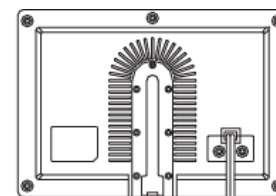


FRONT VIEW

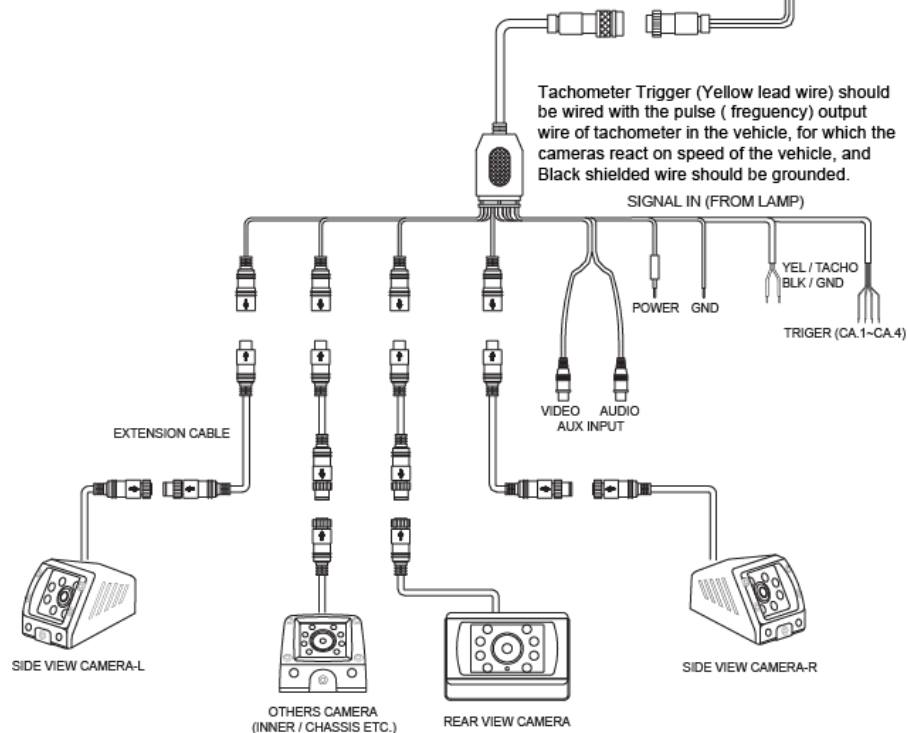


CAMERA CONNECTION

PIN NO.	DESCRIPTION
1	VIDEO OUTPUT
2	AUDIO
3	DC12V POWER
4	GROUND
5	HEATER



BACK VIEW



PV701M 7" Color Rear View Monitor

7" Color Wide TFT LCD Monitor





Products Information



PV 701M 7" Color Rear View Monitor

KEY FEATURES

- Color Rear View Monitor
- 7"Color Wide(16:9) TFT-LCD Monitor
- 1440 × 234 Pixels
- Display Mode : Nor./ Mir. & Up/ Down Image Reversing
- Each Channel Image Rotation
- 10 ~ 32V DC Free Voltage Operation
- 3 Camera Inputs or 2Camera + AV(RCA) Input-Optional
- 3 Ch. Trigger Function / Signal from "R" Gear & Winker on Auto Screen Display
- Shutter / Tilt Camera Available (Ch. 1 only)
- Auto Bright : Built-in CDS Sensor
- Accepts NTSC, PAL and SECAM Formats
- A/V In for VCR, VCD, DVD, DVR – Optional
- Button Illumination
- Built-in Speaker
- Rainproof (IP 54)
- Vibration Resistant (4G)
- Sun Shield with Protection Rubber- Patent
- Mountable to the Dashboard / Ceiling / Wind Shield
- Space-Saving Design
- Remote Control-Option

SPECIFICATIONS

Screen Size	7" Wide / 155mm × 89mm
Resolution	1440 (w) × 234(H) mm
Dot Pitch	0.107(w) × 0.370(H)mm
Field of View	Up : 40° / Down : 60° Left : 60° / Right : 60°
Signal Format	NTSC / PAL / SECAM
Input Signal	3 Cameras / AV Input
Power Source	DC 10~32V Free Voltage
Power Consumption	Max. 14 Watts
Operation Temperature	-4F° to + 158F° (-20°C to + 70°C)
Storage Temperature	-22°F to + 185°F (-30°C to + 85°C)
Dimension	186(w) × 132(H) × 25(D)mm 7.3(w) × 5.2(H) × 1.0(D) inch
Weight	0.6kg



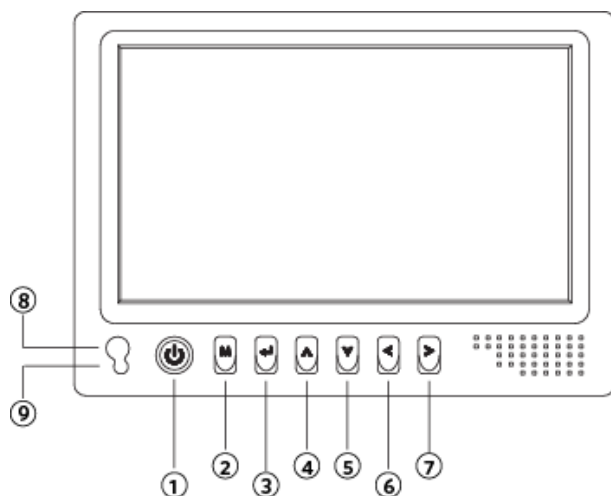


Products Information



Features / Technical Specifications

Main Unit



- ① Power switch
- ② Menu
- ③ Enter
- ④ Channel Up
- ⑤ Channel Down
- ⑥ Volume Down
- ⑦ Volume Up
- ⑧ Remote Control Sensor
- ⑨ Auto Bright Sensor



MONITOR	7" WIDE TFT LCD	RESOLUTION	1440 (w) x 234 (h) Pixels
		BRIGHTNESS	450 cd / m ²
		SCREEN MODE	WIDE SCREEN (16:9)
		CONTRAST RATIO	300 : 1
	FUNCTIONS	CAR REAR VIEW	AUTOMATIC SCREEN-ON (SIGNAL FROM "R" GEAR)
		CAR SIDE VIEW (X2)	AUTOMATIC SCREEN-ON (SIGNAL FROM WINKER)
		DISPLAY MODE	NOR / MIR. & UP / DOWN IMAGE REVERSING PER CH.
		3CA, or 2CA + 1 AV INPUT	REAR / SIDE (L,R) CAMERA & AV (OPTION)
		POWER SOURCE	DC 10V ~ 32V (Free voltage)
		OPERATING TEMP.	-20°C ~ 70°C / -4°F ~ +158°F
		STORAGING TEMP.	-30°C ~ 85°C / -22°F ~ +185°F
		AUDIO OUTPUT	BUILT-IN SPEAKER (1w)
		REMOTE CONTROL	BUILT-IN REMOTE RECEIVER
		AUTO BRIGHT	BUILT-IN CDS SENSOR
	SIZE	DIMENSION	186 (w) x 132 (h) x 25 (d) mm (7.3 x 5.2 x 1.0 Inch)
		WEIGHT	0.6 Kg
	CAMERA	WATERPROOF / SUN SHIELD / IR SENSOR / NORMAL / MIRROR / HEATER	
	ACCESSORIES	POWER & CAMERA INPUT CABLE / STAND BRACKET KIT / SUCTION CUP KIT (OPTIONAL) / SUN SHIELD WITH PROTECTION RUBBER (PATENT PENDING)	
	OPTIONAL	REAR / SIDE / SHUTTER / TILT CAMERA / REMOTE CONTROL	



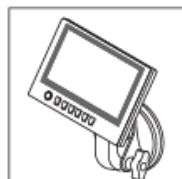
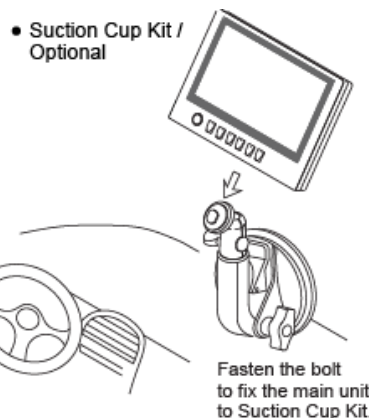
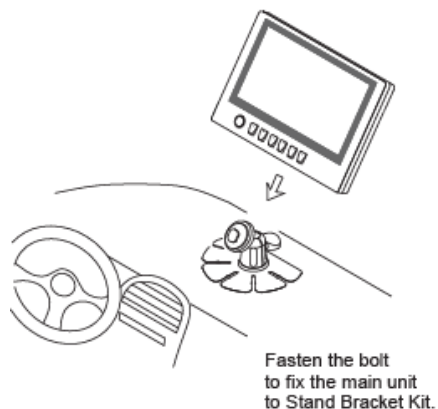
Products Information



Using PV701M in the car

For using PV701M on the dashboard

- After connecting power to the unit through the Cigarette adaptor, press [Power button] on the main unit or on the Remote Control to power on.
- Set up PV701M with Stand Bracket Kit and fix the Stand Bracket Kit on the dashboard of the car.



Accessories

- Power & Camera Input Cable



- Stand Bracket Kit



- Suction Cup Kit / Optional



- Sun Shield with Protection Rubber



- User Guide

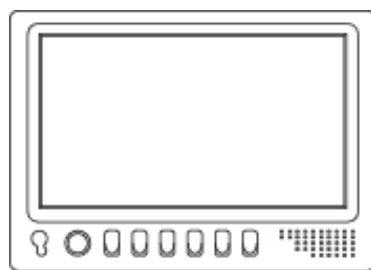




Products Information



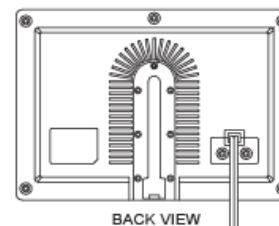
System Wiring



FRONT VIEW



SIDE VIEW

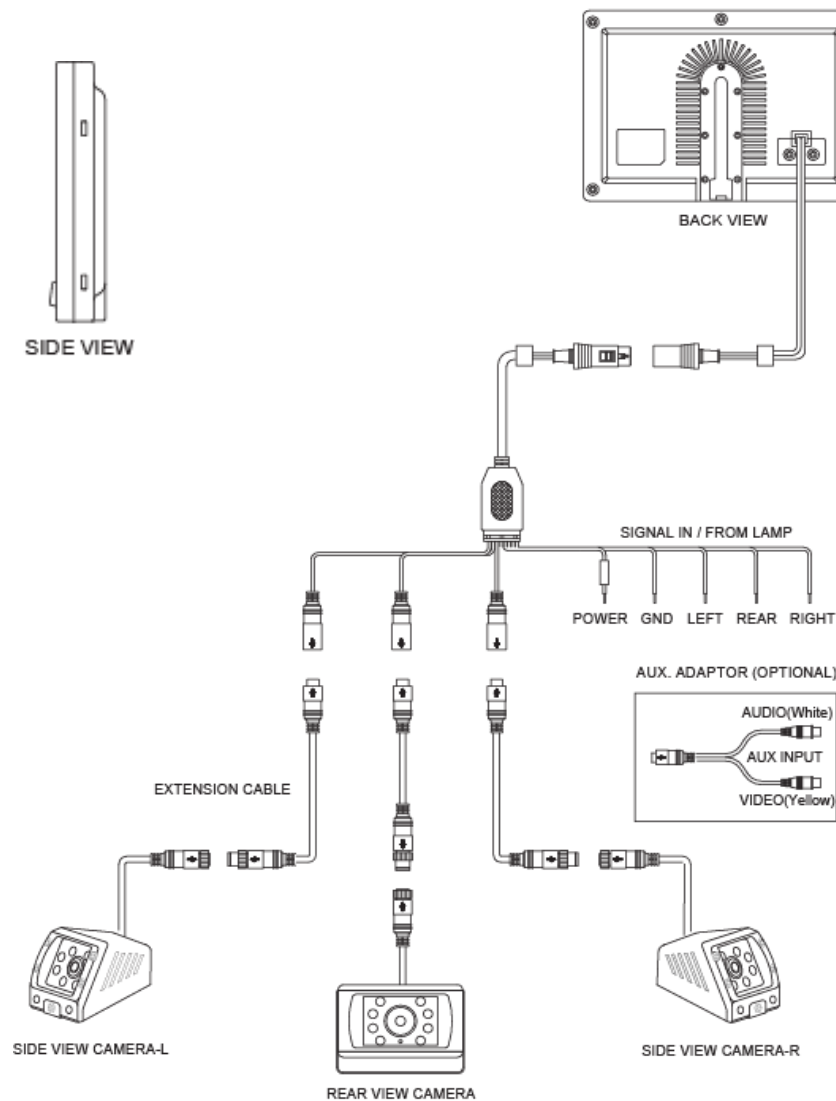


BACK VIEW



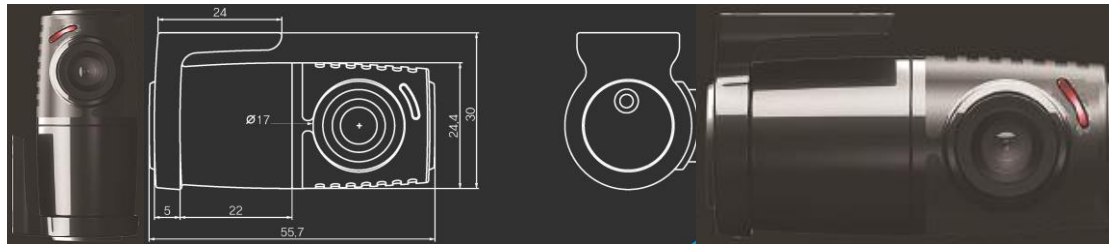
CAMERA CONNECTION

PIN NO.	DESCRIPTION
1	VIDEO OUTPUT
2	AUDIO
3	DC12V POWER
4	GROUND
5	HEATER



PVHD-101C Car DVR HD Camera

1/2.9" CMOS HD Sensor 120° Wide Angle Camera





Products Information



PVHD-101C HD Car DVR Camera



KEY FEATURES

- 1/2.9" CMOS HD Sensor
- World best Wide View 120° (f=2.0mm)
- Reverse Image
- Over 1000 TV lines
- 0.05 Lux at F 1.2 AGC On
- Automatic gain control
- Automatic white balance control
- Electronic auto iris
- DC5V, 10% Max. 80mA

SPECIFICATIONS

Image Orientation	Reverse Image
Image Sensor	1/2.9" CMOS HD Sensor
Effective Pixels	1312(H) X 740(V)
Scanning System	/ 2:1 Interlacing
Synchronizing system	Internal synchronization
Horizontal Resolution	More than 1,000 TV Lines
Video output	16bit GMSL Serializer With STP CABLE.
S/N ratio	41.9 dB
Gamma	0.45
Standard Lux	1,000 Lux at F 4.0 (3,200'K)
Min. Illumination	0.05 Lux at F 1.2 AGC On
Lens	f=2.0mm / View 120°
Gain Control	Automatic Gain Control (0~18dB)
White Balance	Automatic White Balance Control
Input Voltage	5V Power with HD Rate
Ambient Temperature	-30°C ~ 80°C, 85% RH
Housing Material	PC + ABS
Dimensions	φ30 X 52mm

PVHD-102C Rearview HD Camera

1/2.9" CMOS HD Sensor 120° or 160° Wide Angle Camera





Products Information



PVHD-102C Rearview HD Camera

KEY FEATURES

- 1/2.9" CMOS HD Sensor
- World best Wide View 120° (f=2.0mm) or 160°
- Reverse Image
- Over 1000 TV lines
- 0.05 Lux at F 1.2 AGC On
- Automatic gain control
- Automatic white balance control
- Electronic auto iris
- Waterproof (Certify IP 67)
- DC5V, 10% Max. 80mA

SPECIFICATIONS

Image Orientation	Reverse Image
Image Sensor	1/2.9" CMOS HD Sensor
Effective Pixels	1312(H) X 740(V)
Scanning System	/ 2:1 Interlacing
Synchronizing system	Internal synchronization
Horizontal Resolution	More than 1,000 TV Lines
Video output	16bit GMSL Serializer With STP CABLE.
S/N ratio	41.9 dB
Gamma	0.45
Standard Lux	1,000 Lux at F 4.0 (3,200'K)
Min. Illumination	0.05 Lux at F 1.2 AGC On
Lens	f=2.0mm / View 120°
Gain Control	Automatic Gain Control (0~18dB)
White Balance	Automatic White Balance Control
Input Voltage	5V Power with HD Rate
Ambient Temperature	-30°C ~ 80°C, 85% RH
Housing Material	Zinc & EGI
Dimensions	27 X 28 X 30mm
IP Resistance	Certify IP 67



PV 601SCH Side View Camera

1/3" Color Side View Camera With IR LEDs





Products Information



PV 601SCH Side View Camera

KEY FEATURES

- 1/3" Sony Super HAD CCD Sensor (Compatible with Sharp CCD)
- 700 TV Lines (520,000 / 600,000Pixels) / 0 Lux at F2.0 (LED ON)
- Mirror & Normal Image Views
- IR LEDs for Day & Night Views
- Automatic LED on /off
- Auto - iris lens
- Audio Available
- 100% Complete Waterproof design (IP68)
- Aluminum diecast housing for Vandal-proof, Rustproof, Waterproof
- Vibration Resistant (10G)
- Mounting to Side / Rear / Front / Ceiling & on Bottom Chassis
- Wide View Angle 120°, 130° Optional
- Lens Exchangeable
- Heater System built-in

SPECIFICATIONS



Image Sensor	1/3" Sony Super HAD Color CCD
Effective Pixels (MAX.)	NTSC 520,000 Pixels PAL : 600,000 Pixels
Resolution	700 TV Lines
Synchronizing system	Internal SYNC
Video output	75 Ohms 1.0vp-p Composite.
S/N ratio	More than 48dB
Min. Illumination	0 Lux at F 2.0 / ON LED
Power source	DC 12v (Tolerance 8v ~15v) Max.150mA (ON LED)
Field of View	120°
Field of View / Option	130°
Best Night View Feature	20 degrees visible IR LED × 8ea
Operation Temperature	-58F° to 140F° (-50°C to + 60°C) with Heater
Dimension	60(w) × 55(h) × 78.5(d)mm 2.4(w) × 2.2(h) × 3.1(d) inch
Weight	Approx.0.3kg
Accessories	Mounting Gasket & Screw kits 16ft (5M) Waterproof Cable

PV 701CH Rear View Camera

1/3" Color Rear View Camera With IR LEDs





Products Information



PV 701CH Rear View Camera

KEY FEATURES

- 1/3" Sony Super HAD CCD Sensor (Compatible with Sharp CCD)
- 700TV Lines (520,000 / 600,000Pixels) / 0 Lux at F2.0 (LED ON)
- Mirror & Normal Image Views
- IR LEDs for Day & Night Views
- Automatic LED on /off
- Auto - iris lens
- Audio Available
- 100% Complete Waterproof design (IP68)
- Aluminum diecast housing for Vandal-proof, Rustproof, Waterproof
- Vibration Resistant (10G)
- Mounting to Rear of the vehicle
- Wide View Angle 120°, 130°, 150° Optional
- Lens Exchangeable
- Heater System built-in
- Sun Shield Available

SPECIFICATIONS

Image Sensor Effective Pixels (MAX.)

Resolution Synchronizing system

Video output

S/N ratio

Min. Illumination

Power source

Field of View

Field of View / Option

Best Night View Feature

Operation Temperature

Dimension

Weight

Accessories

1/3" Sony Super HAD Color CCD

NTSC : 520,000 Pixels

PAL : 600,000 Pixels

700 TV Lines

Internal SYNC

75 Ohms 1.0vp-p Composite.

More than 48dB

0 Lux at F 2.0 / ON LED

DC 12v (Tolerance 8v ~15v)

Max.150mA (ON LED)

150°

120°, 130°

20 degrees visible IR LED × 8ea

-22F° to 140F° (-30°C to + 60°C) with Heater

70(W) × 42(H) × 55(D)mm

2.76(W) × 1.65(H) × 2.17(D) inch

Approx.0.3kg

Mounting Bracket & Sun Shield & Screw kits

65ft (20M) Waterproof Cable

